



Newline Products, Inc
2901 Technology Dr, Suite 135
Plano, Texas 75074
Tel: (972)-881-3318
Fax: (972)-881-0985

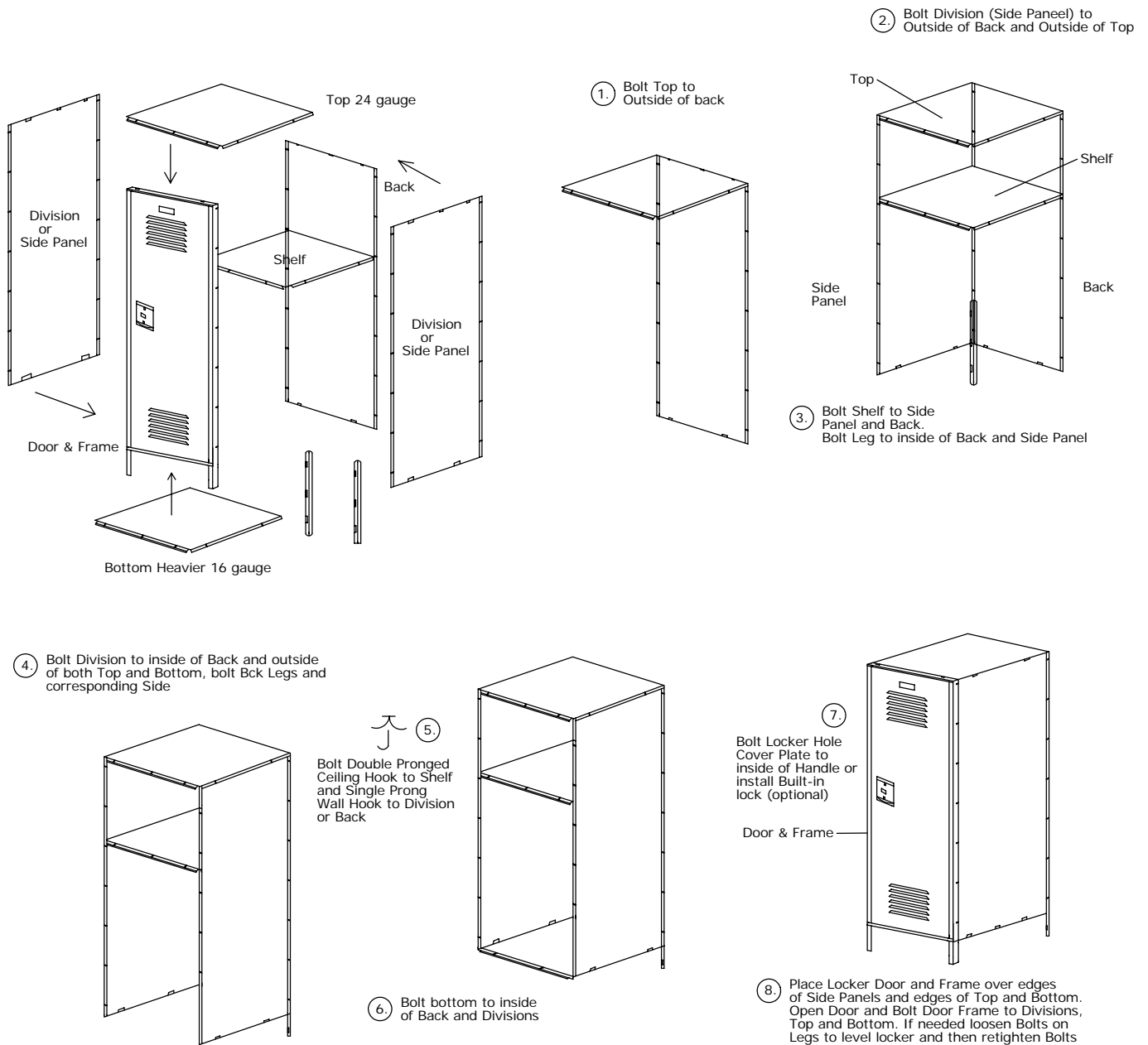
ASSEMBLY INSTRUCTIONS

Locker

Assembly Instructions - Lockers

TIGHTEN ALL NUTS AND BOLTS AFTER YOU HAVE COMPLETELY ASSEMBLED THE LOCKER TO ENSURE A TIGHT STRONG FIT!

EXPLODED VIEW OF SINGLE TIER LOCKER ASSEMBLY INSTRUCTION



FOR SAFETY PURPOSE, WE STRONGLY RECOMMEND THAT ALL LOCKERS BE ANCHORED EITHER TO FLOOR OR WALL.



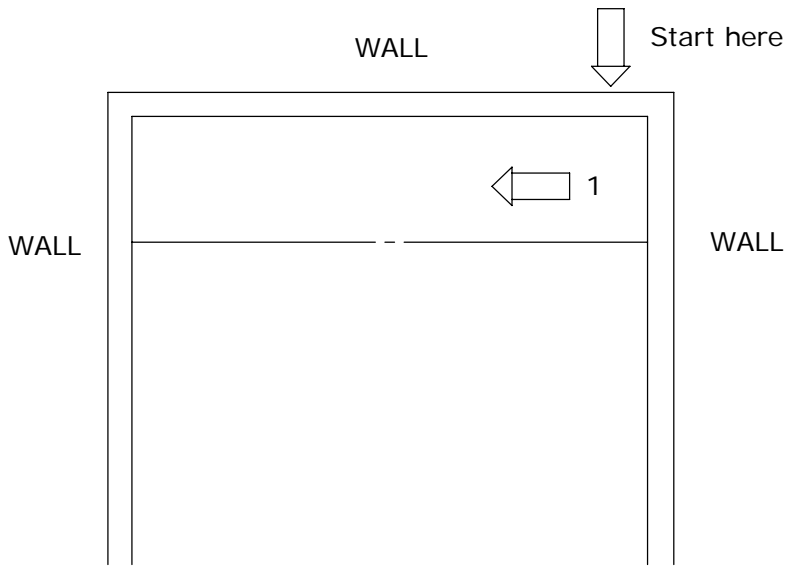
Newline Products, Inc
2901 Technology Dr, Suite 135
Plano, Texas 75074
Tel: (972)-881-3318
Fax: (972)-881-0985

INSTALLATION INSTRUCTIONS

Locker

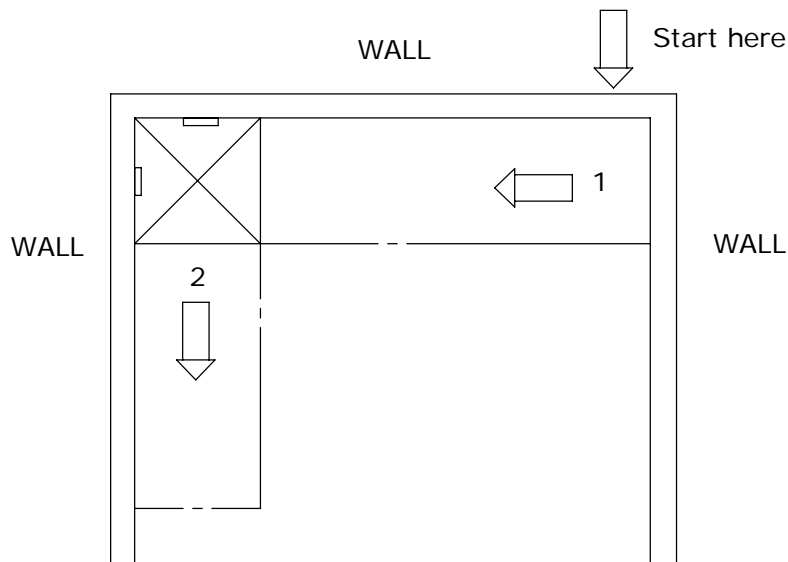
Locker Installation Instructions

Installation Hardware Supplied by Others



WALL TO WALL STARTING RUN

- A. Measure locker area between walls. Determine that correct # of lockers will fit.
- B. Start install with the lockers on the right.
- C. If space remaining after lockers installed, use fillers to fill space. Install the fillers to left of lockers (if applicable).
- D. Install top fillers last. Install a support on the wall and rest Top Filler on support and top of locker.
- E. Tighten all nuts and bolts.
- F. Adjust doors.



L SHAPE OPEN END

- A. Measure locker area.
- B. Start with the lockers from back wall right side (if layout is the reverse from shown, start from the left side).
- C. Install fillers to left of lockers (if applicable).
- D. Install some type of blocking on both walls in the corner for top corner fillers to rest on.
- E. Install side wall lockers.
- F. Install top fillers last.
- G. Tighten all nuts and bolts.
- H. Adjust doors.



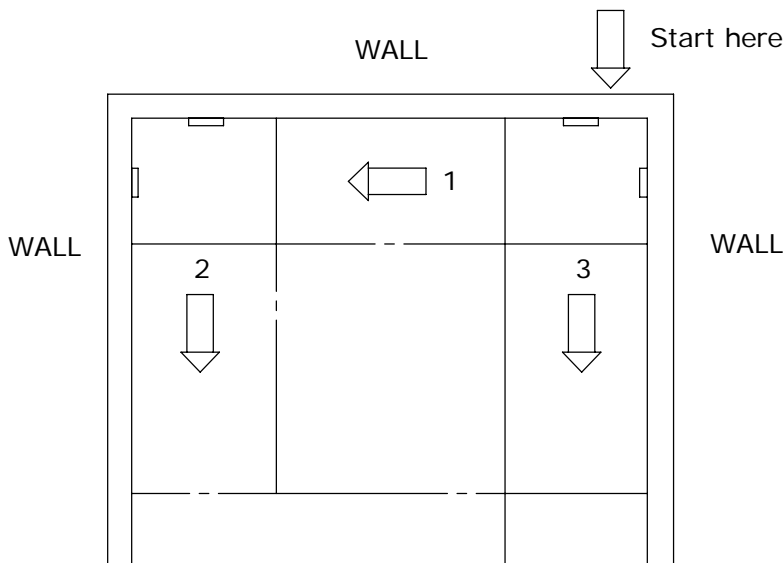
Newline Products, Inc
2901 Technology Dr, Suite 135
Plano, Texas 75074
Tel: (972)-881-3318
Fax: (972)-881-0985

INSTALLATION INSTRUCTIONS

Locker

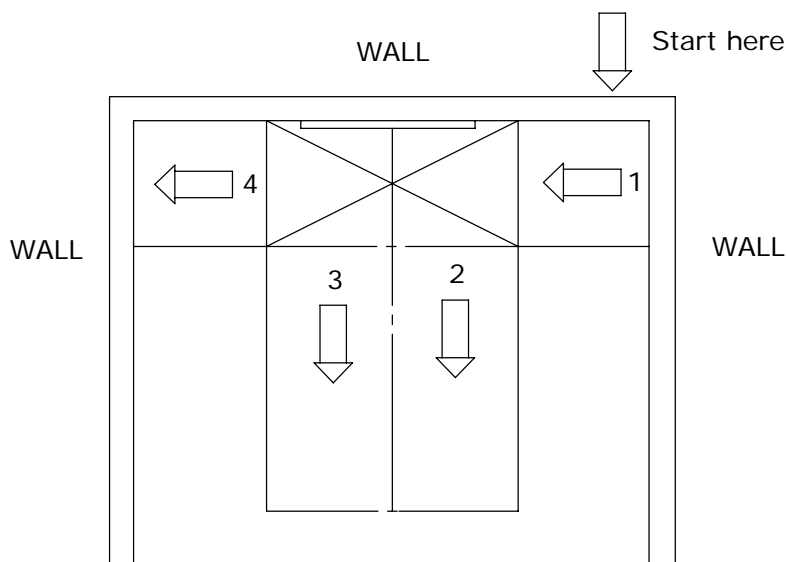
Locker Installation Instructions (Continued)

Installation Hardware Supplied by Others



U SHAPE

- Measure locker area.
- Start install of lockers on back wall.
- Center back wall lockers.
- Install some type of blocking on both walls in the corner for top corner fillers to rest on.
- Install fillers.
- Install top fillers last.
- Tighten all nuts and bolts.
- Adjust doors.



AREA WITH ISLANDS

- Measure locker area.
- Start install of lockers on back wall right side.
- Install fillers to left of lockers (if applicable).
- Install some type of blocking on both walls in the corner for top corner fillers to rest on.
- Install fillers.
- Install island lockers. Alternate sides, bolt back to back.
- Install top fillers last.
- Tighten all nuts and bolts.
- Adjust doors.

*Note: Fillers to fill open space next to lockers can be purchased separately.

ALL LOCKERS SHALL BE ANCHORED TO THE WALL AND/OR FLOOR SECURITY WITH APPROPRIATE FASTENERS.